

Tuesday 1st September 2020

Dear Parent/Carer,

We are really looking forward to welcoming back our students to the academy. I wanted to give you some updates and key reminders so that you and your child are ready to return successfully.

First Day of School:

Year 11 and 7 – Monday 7th September

Years 8, 9 and 10 – Tuesday 8th September

Tutor Groups:

In order to ensure that we are able to maintain year group and teaching group ‘bubbles’ and minimise contact within those bubbles, we have had to make a number of changes to tutor and teaching groups. We understand that this may be a change but in order to create a safe and secure environment, it is essential.

Timings of the School Day:

In order to minimise contact between students at the start and end of each day, we are staggering the start and end times for year groups.

Years 7, 9 and 11:

Arrive from 8:00am; school starts 8:25am; school finishes 15:15

Years 8 and 10:

Arrive from 8:35am; school starts 8:55am; school finishes 15:40

Hand-Washing: Students will have opportunities to wash their hands and sanitise them regularly. We have hand sanitisers in every learning zone and in the outdoor areas. Part of the entry routine to classrooms will be to sanitise hands.

For hand washing, students will be able to use year group specific toilets at break and at lunch. There will also be hand washing stations in all outdoor areas for use before school, at break, at lunch and after school.

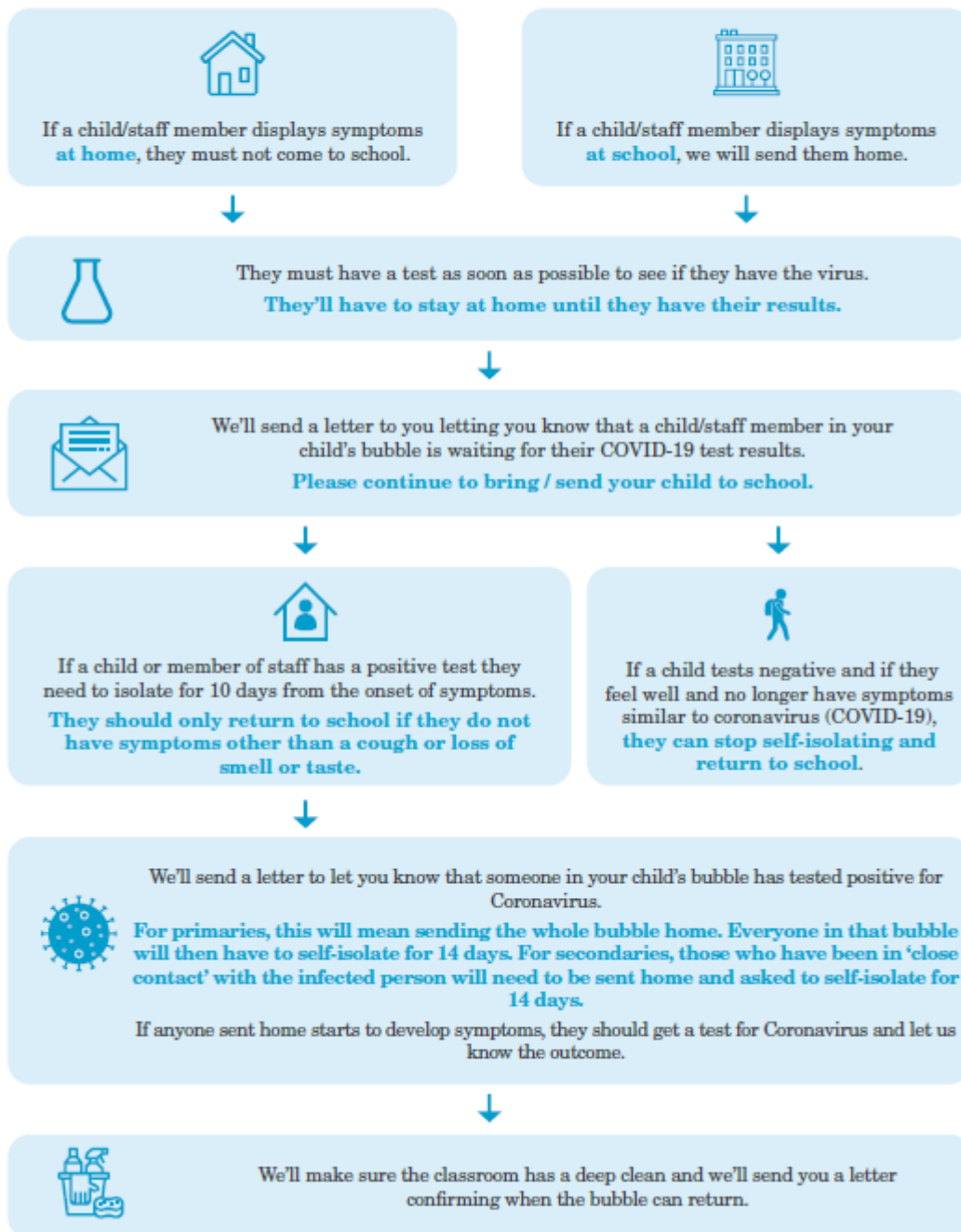
We ask that all students wash their hands when they go to the bathroom and use the hand sanitiser regularly as well as wash their hands again when they get home.

COVID symptoms: If you develop a cough or temperature at school, students should tell their teacher so they can go to a room on their own until they can be collected to go home. If you develop symptoms at home, do not come to school and inform the school. You must self-

isolate and request a test. If this is positive, self-isolate for a total of 14 days. I have included a flow chart of what we will do if we become aware that someone may have developed symptoms.

The process:

What happens if a child or staff member shows symptoms of the Coronavirus (COVID-19).



The government have issued guidance around the wearing of face coverings. These are our expectations relating to face coverings:

1. All students are encouraged to walk or cycle to school if they can. We have purchased additional bike racks to accommodate the additional demand. However, if they are to use public transport, the government require all children over the age of 10 to wear a face covering.
2. When not worn, face coverings used on public transport should be removed and placed into a plastic sealable bag if reusable, as per government guidance, or into the lidded bins by entrances if disposable.
3. Scientific guidance from the World Health Organisation suggests that face coverings can prevent the spread of infection as they block water droplets leaving the mouth. Face coverings do not protect the wearer, but those around them.
4. Students are therefore encouraged to wear a face covering in communal areas. Communal areas in our school are defined as places where students are not in lessons, tutor time or assembly, but remain in the building. The reason for this is because students will come into contact with students who are not in their protective bubbles (different year groups and teaching groups) when moving around the school building.
5. If a student chooses to wear a face covering in a communal area, the government have advised that for hygiene reasons, this covering should be different to the one worn on public transport. The face covering will remain the responsibility of the student.
6. Students are advised not to wear face masks in classrooms or assembly. This is because they are already in their protective bubbles. Wearing face coverings for 6 hours a day is unlikely to be conducive to learning.
7. Face coverings will only be permitted if they are actual face masks, NOT scarves or bandanas, as these offer more protection. Face coverings should be plain in one of the following colours: blue, black, green, white or pink.

I wrote to you in July outlining the measures we have in place to mitigate against the risk of transmitting infection. The letter can be found on our website [here](#). Parents are encouraged to contact me if you have any questions about control measures. My contact is: **tim.dainty@evelyngraceacademy.org**.

Survey for students with underlying health conditions:

It is important that our information on student health conditions is accurate and up to date. This is a link for a survey for all parents to complete on the behalf of their child:

<https://forms.office.com/Pages/ResponsePage.aspx?id=dBTLADSljUaCn2NuzjLCTJJSbLrcsFdLhXO7rggFsHRUQTdKNE5GVVBPOFhVTopUVEUxRopOUoQyRC4u>

Changes to our behaviour policy

In a bid to improve our systems and limit any risk of infection transmission, we have made some changes to our policy.

1. Detentions will be 60 minutes in length and run each day
2. Detentions will be sat in year group bubbles
3. Students in our internal exclusion room will be required to sit 2 metres apart
4. HW detentions will be centralised and 15 minutes in length
5. Deliberately coughing or sneezing at someone will be treated as a serious incident

We take this time to advise you of the new staff members joining EGA in September and updating you on our Senior Leadership Team, and Tutors.

Senior Leadership Team	
Tim Dainty	Principal
John Rowley	Vice Principal: Culture & Ethos
Fiona Findlay	Vice Principal: Quality of Education
Sophia Thomas	Assistant Principal: Behaviour & Attendance
Claire Walley	Assistant Principal: Safeguarding, Inclusion and Quality First Teaching
Daniel McEwen	Assistant Principal: Assessment & Data
Norris Morrissey	Associate Assistant Principal: Year 11 Lead & Student Engagement & Participation/ Y11 DOL

New Staff

Name of Staff Member	Position
Sophia Thomas	Assistant Principal: Behaviour & Attendance
Adétòkunbò Abraham	Computer Science Teacher
David Oldridge-Turner	Head of History
Layla Mannings	Head of Drama/Head of House Brockwell
Seevana Raghubeer	DT Teacher
Ifeloluwa Oguntokun	English Teacher
Abeba Byfields	History Teacher
Mary Ingham	Science Teacher
Harriet Roe	Biology Teacher
Agnus Yeboah	Science Teacher
Alicia Haney	Librarian

Form Tutor Teams 2020/21

Tutor Group	Form Tutor	Co-Tutor	Room
7Seacole	Damla Sonmez (RE)		2.09
7Nightingale	Thomas Hall (PE)	Abeba Byfiels (History)	2.07
7Avicenna	Shona MacManamon (Geo)		2.11

Tutor Group	Form Tutor	Co-Tutor	Room
8Dean	Lucy Paine (English)		1.06
8Edison	Kirsty Healey (English)		1.07
8Guttenberg	Angela Crawley (English)	Harriet Roe (Sci)	1.05
8Lovelace	Lorna Noble (English)		1.12

Tutor Group	Form Tutor	Co-Tutor	Room
9King	Sarah Latunji (Music)		3.35
9Gandhi	Michael Clarke (PE)		3.35
9Pankhurst	Rosa Domingo-Roige (EAL)	Alex Hadden (Geo)	3.34
9Mandela	David Oldridge-Turner (History)		3.36
9Davis	Maria Crispino (MFL)		3.53

Tutor Group	Form Tutor	Co-Tutor	Room
10Angelou	Mary Ingham (Science)	Martin Wood (Science)	1.44
10Baldwin	Aisha Mohammed (Science)		1.45
10Bronte	Hannah Mansell (Art)	Wen Ju Sun (Mandarin)	1.46
10Dahl	Graham Gayle (Art)	Seevana Raghubeer (DT)	1.27

Tutor Group	Form Tutor	Co-Tutor	Room
11Beethoven	Ashraf Ullah (Maths)		3.03
11Dumas	Layla Mannings (Drama)		3.09
11Fitzgerald	John King (Maths)	Novellette Bennett (Maths)	3.02
11Khan	Shuhal Ahmed (Maths)		3.08
11Olivier	Damian Kidd (Maths)		3.01

We have worked extremely hard to put measures in place to keep staff and students safe so that we all may return and focus on learning. If you wish to discuss any aspect of our return to school, please do not hesitate to contact me: tim.dainty@evelyngraceacademy.org

Yours Sincerely,

Tim Dainty



Principal